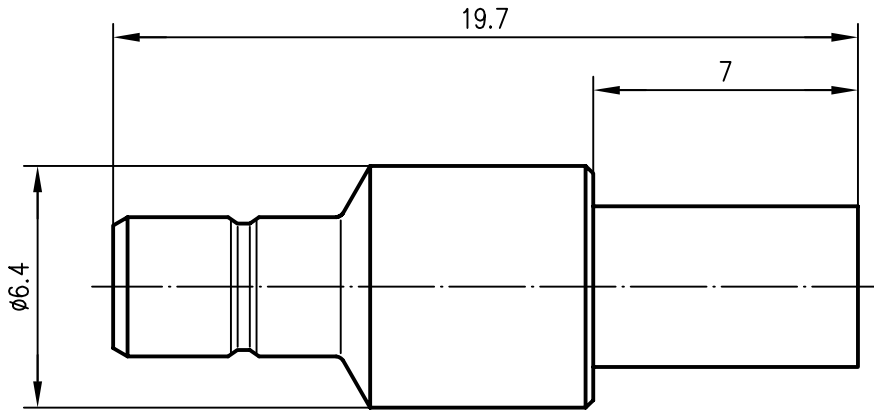



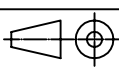
Anschlußmaße nach IEC 60 169-10 /
 dimensions according to IEC 60 169-10



| | | |
|--|-------------|--------------|
| Innenleiter / inner conductor | CuZn38Pb1.5 | Cu1Ni2Au1.27 |
| Außenleiter / outer conductor | CuZn39Pb3 | Cu1Ni2Au0.8 |
| Crimprohr / crimp ferrule | SF Cu w | Ni5Au0.2 |
| sonstige Metallteile / other metal parts | CuZn39Pb3 | Cu2Ni5Au0.2 |
| Isolierung / insulator | PTFE | |

für Kabel / for cable G 8: HF 50 0.5/1.5 LDY NEK/CDT,
 K02252 D, RD-316

Montage C1620

| | | | | | | | |
|--------------------|-------------------------------------|----------------|---------------|--|---------------------------------------|---------------------------|---|
| | | | | 2003 | Datum/date | Name/name | Werkstoff/ material |
| | | | | gez./drawn | 11.02. | MA | |
| | | | | gepr./appr. | 11.02.03 | BJ | Oberfläche/ finish |
| | | | | Norm/stand. | | | |
| | | | | Maßstab/scale | Benennung/title | |  |
| | | | | 5:1 | SMB-Kabelstecker SMB-Straight-Plug | | |
| | | | | untol. Maße/ dim. without tolerances according to | Untert./doc.type | Zeichnungsnr./drawing no. |  Maße/dimensions: mm |
| | | | | K | J01160A0471 | | |
| Änd./rev. Index | Änderungsmittlung/ revision code | Datum/ date | Name/ name | Ersatz für/ replaces | | | Original: DIN A4 |